

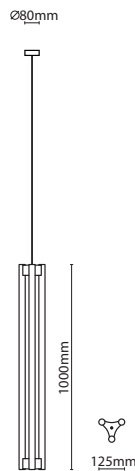


# INSTALLATION MANUAL

## L I A

'Cutting through darkness'

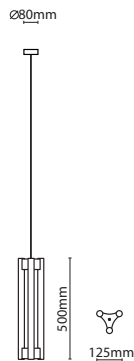
### L I A Suspension 100



Type	Suspension light
Material	Brass
Environment	Indoors
Dimension	1000 mm
Cable Length	Standard mounting 1500 mm
Weight	1.4 kg
Certification	IP20 CE
EU/UK	230 V
Ceiling Rose	Ø 80 x 25 mm, flat Ø 100
Lamps	3 x linear opal LED S14s*, 3 x 16.5 W, 2700 K, dimmable, 3 x 1000 lm, energy class A

050 01 101 11	polished nickel with transparent cable
050 01 202 12	brushed brass with black fabric cable

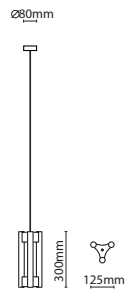
### L I A Suspension 50



Type	Suspension light
Material	Brass
Environment	Indoors
Dimensions	500 mm
Cable Length	Standard mounting 1500 mm
Weight	1.1 kg
Certification	IP20 CE
EU/UK	230 V
Ceiling Rose	Ø 80 x 25 mm, flat Ø 100
Lamps	3 x linear opal LED S14s*, 3 x 9 W, 2700 K, dimmable, 3 x 450 lm, energy class A

050 02 101 11	Polished nickel with transparent cable
050 02 202 12	Brushed brass with black fabric cable

L I A  
Suspension 30

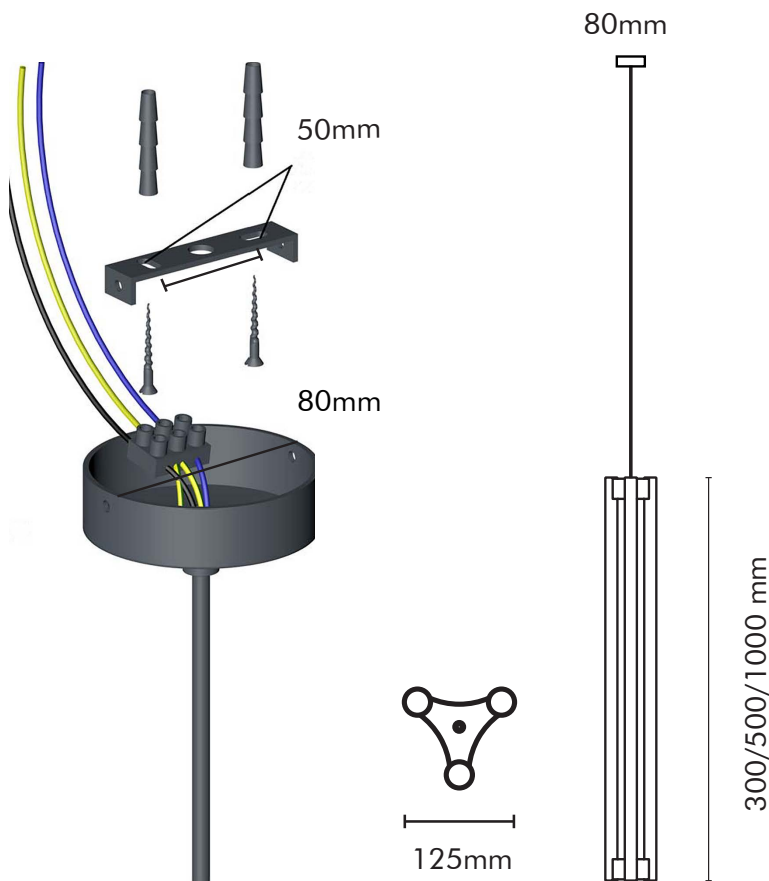


Type  
Material  
Environment  
Dimension  
Cable Length  
Weight  
Certification  
EU/UK  
Ceiling Rose  
Lamps

Suspension light  
Brass  
Indoors  
300 mm  
Standard mounting 1500 mm  
0.8 kg  
IP20 CE  
230 V  
Ø 80 x 25 mm, flat Ø 100  
3 x linear opal LED S14s\*, 3 x 6 W,  
2700 K, dimmable, 3 x 250 lm, energy  
class A

050 03 101 11  
050 03 202 12

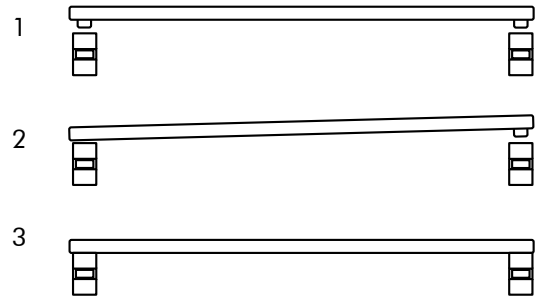
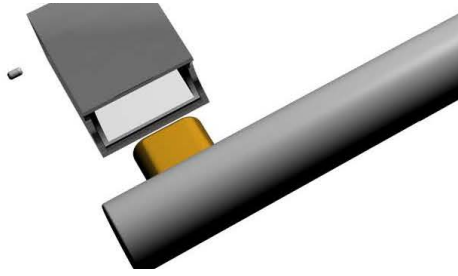
polished nickel with transparent cable  
brushed brass with black fabric cable



INSTALLATION

Before commencing installation ensure the relevant mains supply has been safely isolated/disconnected. Installation should be carried out by a qualified electrician. Ensure all electrical connections are tight with no loose strands, including factory made connections. The Mains power must only be switched on once the fitting has been electrically connected to the driver.

1. Fit the 3 lamps before starting the installation (see below).
2. Remove the base from the installation bracket.
3. Affix the bracket to the ceiling with 2 screws (hole size max. 4.5 mm, 50 mm apart).
4. Connect the unit to the mains.
5. Fix the unit back on its base and re-tighten 2 screws on the side.



## LAMP INSTALLATION

1. Before commencing installation ensure the relevant mains supply has been safely isolated/disconnected.
2. Use supplied fabric gloves to prevent any stains on the surface.
3. Whilst applying pressure push each socket into the lamp holder one at a time (see graphic).
4. Due to the risk of glass fracture handle the lamps with care!

Under unfavourable conditions these lamps can lead to acoustic noise. In case of resonance even low noise can cause audible effect. The installation as well as the dimmer or the transformer (harmonics or electronic resonance) are possible influencing factors.

## CARE INSTRUCTIONS

1. Use a soft dry cloth to ensure a fingerprint free surface. We recommend the use of micro fibre cloths.
2. Warning: do not use alcohol or other solvents for cleaning.

\* Please contact [sales@kaia.at](mailto:sales@kaia.at) for further information on dimmers etc. Please note KAIA Ltd cannot take any responsibility for the connection with your dimming or central control system. It is the customer's responsibility to ensure the compatibility with their systems.

[www.kaia.at](http://www.kaia.at)

[sales@kaia.at](mailto:sales@kaia.at)