

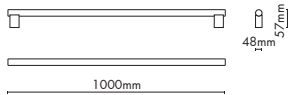


INSTALLATION MANUAL

M E A M I R R O R

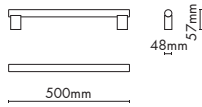
'Line of light'

M E A
Wall / Ceiling
100
Mirror



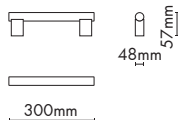
Type	Ceiling/wall light
Material	Solid brass
Environment	Indoors
Dimensions	1000 x 48 x 58 mm
Weight	0.6kg
Certification	IP20 CE
EU/UK	230 V
Bathroom	Zone 3
Lamps	Linear opal LED S14s*, 16.5W, 2700 K, dimmable, 1000 lm, energy class A
040 11 101	Polished nickel
040 11 202	Brushed brass

M E A
Wall / Ceiling
50
Mirror

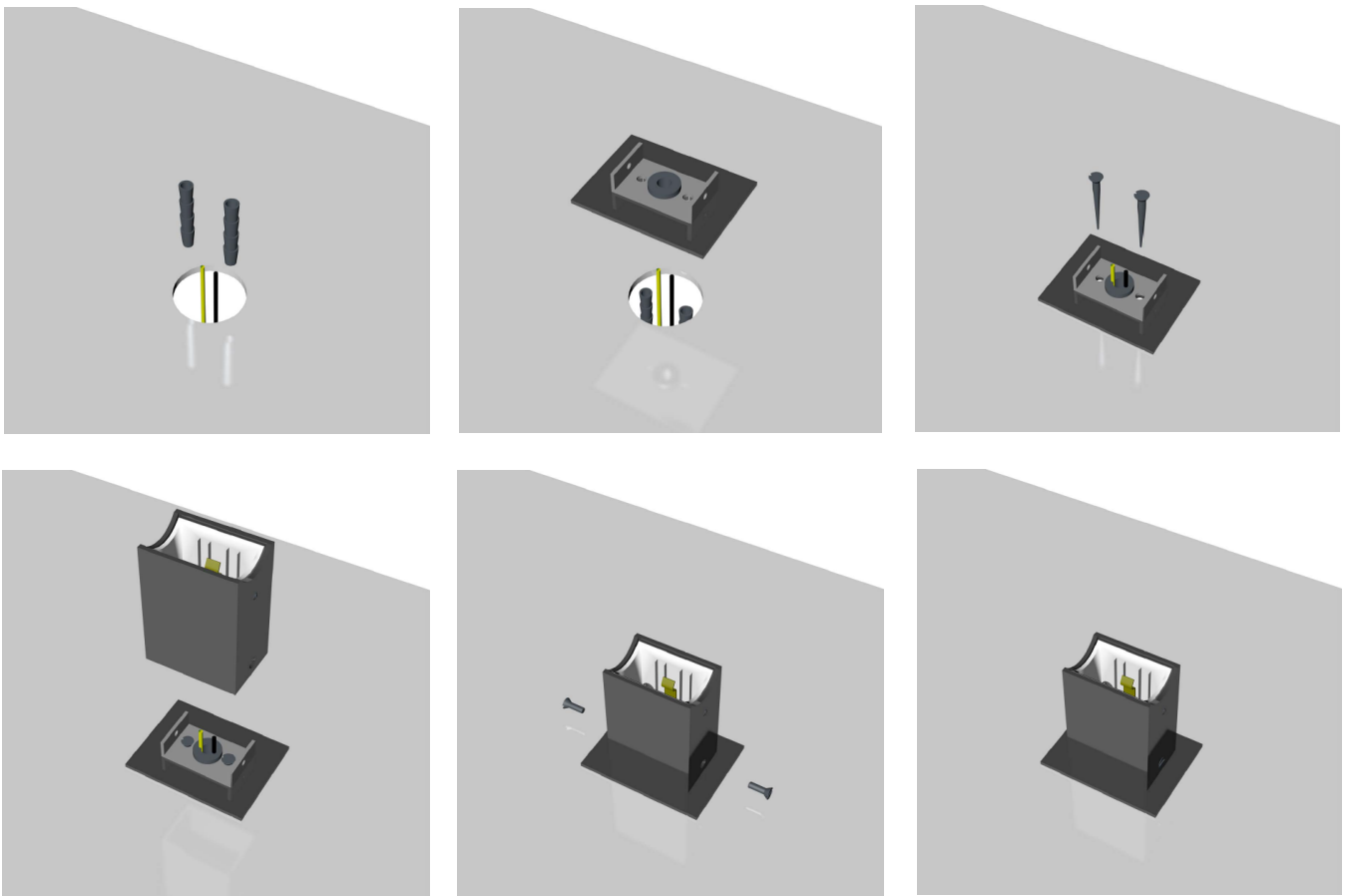
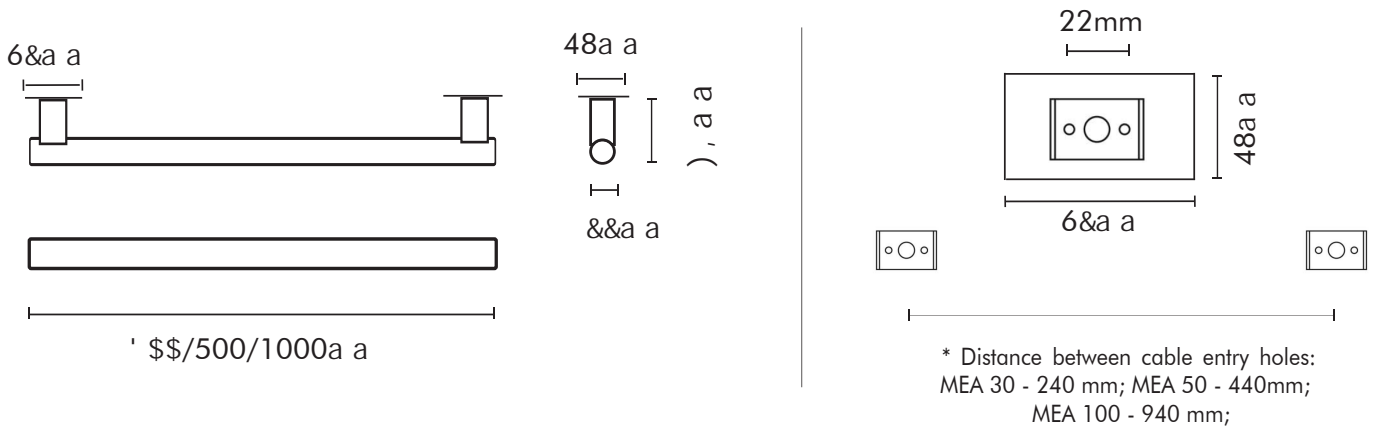


Type	Ceiling/wall light
Material	Solid brass
Environment	Indoors
Dimension	500 x 48 x 58 mm
Cable Length	0.6 kg
Weight	IP20 CE
Certification	230 V
EU/UK	Zone 3
Lamps	Linear opal LED S14s*, 9 W, 2700 K, dimmable, 450 lm, energy class A
040 12 101	Polished nickel
040 12 202	Brushed brass

M E A
Wall / Ceiling
30
Mirror



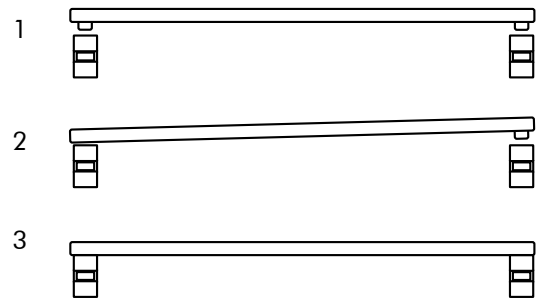
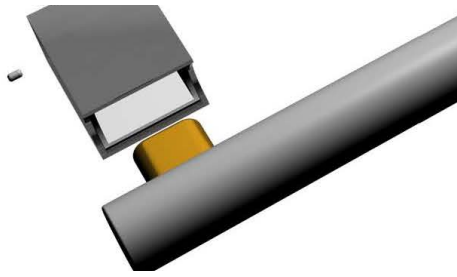
Type	Ceiling/wall light
Material	Solid brass
Environment	Indoors
Dimension	300 x 48 x 58 mm
Cable Length	0.6 kg
Weight	IP20 CE
Certification	230 V
EU/UK	Zone 3
Lamps	Linear opal LED S14s*, 6 W, 2700 K, dimmable, 250 lm, energy class A
040 13 101	Polished nickel
040 13 202	Brushed brass



INSTALLATION

Before commencing installation ensure the relevant mains supply has been safely isolated/disconnected . Installation should be carried out by a qualified electrician. Ensure all electrical connections are tight with no loose strands, including factory made connections. The Mains power must only be switched on once the fitting has been electrically connected to the driver.

1. Remove the base from the installation bracket.
2. Affix the bracket to the surface with 2 screws (hole size max. 4 mm) . Distance between cable entry holes (Dia. 35mm): MEA 30 - 240 mm; MEA 50 - 440mm; MEA 100 - 940 mm;
3. Connect the unit to the mains.
4. Fix the unit back on its base and re-tighten 2 screws on the side.



LAMP INSTALLATION

1. Before commencing installation ensure the relevant mains supply has been safely isolated/disconnected.
2. Use supplied fabric gloves to prevent any stains on the surface.
3. Whilst applying pressure push each socket into the lamp holder one at a time (see graphic).
4. Due to the risk of glass fracture handle the lamps with care!

Under unfavourable conditions these lamps can lead to acoustic noise. In case of resonance even low noise can cause audible effect. The installation as well as the dimmer or the transformer (harmonics or electronic resonance) are possible influencing factors.

CARE INSTRUCTIONS

1. Use a soft dry cloth to ensure a fingerprint free surface. We recommend the use of micro fibre cloths.
2. Warning: do not use alcohol or other solvents for cleaning.

* Please contact sales@kaia.at for further information on dimmers etc. Please note KAIA Ltd cannot take any responsibility for the connection with your dimming or central control system. It is the customer's responsibility to ensure the compatibility with their systems.

www.kaia.at

sales@kaia.at