



Options and accessories :



Coal finish
End caps & fixing straps



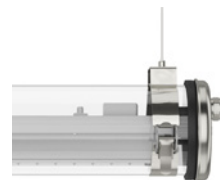
Aluminium gear unit cover
S C G B P



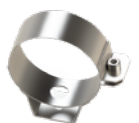
Pre-cabling braided tinned
copper cable



Pre-cabling
with cable plate kit

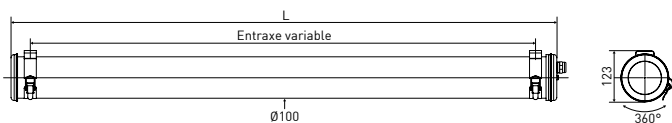


Horizontal suspension kit



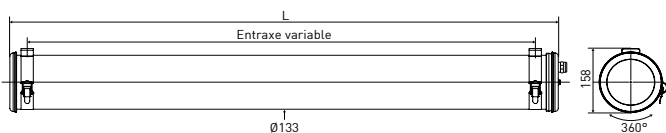
Fixing straps with HSHC
screw

Brueghel Ø100 / Ø133



Principal part numbers Ø100

Lumen (lm)	L(mm)	T(K)	Designation	Code	Cons.(W)
No dimming					
2100	1018	3000	BRUEGHEL 100 S 1018 2100-830	42047126	18
2800	1318		BRUEGHEL 100 S 1318 2800-830	42047127	23
3500	1618		BRUEGHEL 100 S 1618 3500-830	42047128	28
DALI dimming					
2100	1018	3000	BRUEGHEL 100 S 1018 2100-830 RD	42047135	18
2800	1318		BRUEGHEL 100 S 1318 2800-830 RD	42047136	23
3500	1618		BRUEGHEL 100 S 1618 3500-830 RD	42047137	28
Push-button dimming					
2100	1018	3000	BRUEGHEL 100 S 1018 2100-830 RS	42047145	18
2800	1318		BRUEGHEL 100 S 1318 2800-830 RS	42047146	23
3500	1618		BRUEGHEL 100 S 1618 3500-830 RS	42047147	28



Principal part numbers Ø133

Lumen (lm)	L(mm)	T(K)	Designation	Code	Cons.(W)
No dimming					
2400	995	3000	BRUEGHEL 133 S 995 2400-830	43027198	20
3200	1295		BRUEGHEL 133 S 1295 3200-830	43027199	25
4000	1595		BRUEGHEL 133 S 1595 4000-830	43027200	30
DALI dimming					
2400	995	3000	BRUEGHEL 133 S 995 2400-830 RD	43027201	20
3200	1295		BRUEGHEL 133 S 1295 3200-830 RD	43027202	25
4000	1595		BRUEGHEL 133 S 1595 4000-830 RD	43027203	30
Push-button dimming					
2400	995	3000	BRUEGHEL 133 S 995 2400-830 RS	43027204	20
3200	1295		BRUEGHEL 133 S 1295 3200-830 RS	43027205	25
4000	1595		BRUEGHEL 133 S 1595 4000-830 RS	43027206	30

Specifications

Technical Data

Light source	<ul style="list-style-type: none"> High-efficiency removable LED modules (CRI>80, 3 SDCM) 50 000h L80/B10 at 25°C Photobiological safety: no risk (Group 0)
Optics	<ul style="list-style-type: none"> Low glare louvre with reflector and louvres in high performance aluminium Specific satin-finish primary diffuser optics Light mixing chamber
Light comfort	<ul style="list-style-type: none"> Very low glare: UGR ≤19 Very low luminance, work on screen compatible: L65° ≤1500cd/m². Longitudinal glare control: 30° in Ø100, 40° in Ø133 Transversal glare control: 30°
Heat management	Passive heat sink in aluminium
Control gear	Constant current driver
Rapid installation	
Connection	<ul style="list-style-type: none"> With nickel-coated brass cable gland for cable Ø 5-14 mm To a 3 x 2,5 mm² or 5 x 2,5 mm² disconnectable terminal block
Closing	Quick closing with just one screw
Fixing	2 stainless steel fixing straps (with variable centre distance)

Easy maintenance

LED engine maintenance	<ul style="list-style-type: none"> Quick opening and closing with just one screw Patented sliding maintenance system Easily removable LED modules and driver
------------------------	---

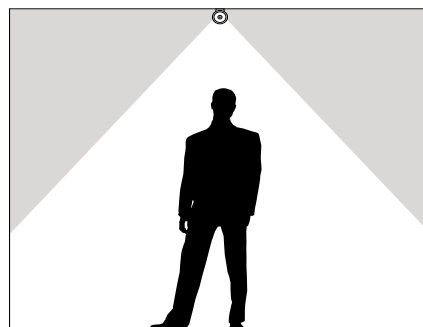
Materials and finishes

Gear tray	Internal grey powder coated steel gear tray RAL 9006
Housing	Coextruded polycarbonate/PMMA diameter 100 or 133 for indoor and outdoor use
End caps, fixing straps	304L stainless steel
Gaskets	Moulded EPDM gaskets

Version July 2020

Low glare ceiling light fitting

Light output	2100 to 4000 lm
Length	995 to 1618 mm
UGR	≤19



Technical Data

Power supply	220-240 V 50/60Hz
Electrical class	Class II
Operating temperature	-20°C to +35°C
Imperviousness	IP66, IP68, IP69K
Shock resistance	IK10
Fire resistance	650°C



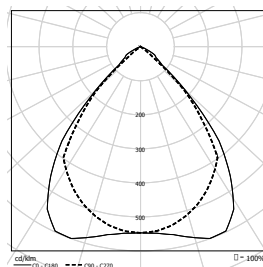
Options

Finishes	
End caps & straps painted Coal RAL7021	COAL
Aluminium gear unit cover Silver/Copper/Gold/Brass/Petrol	CRS/C/G/B/P
Color temperature and CRI	
2700K	827
4000K	840
Tunable white (2700K to 6500K)	On request
CRI 90	On request
Lighting management (5 wires)	
Switch-off warning function (for sensor/timer)	RC
Electrical Class	
Class I	CL1
Materials	
Polycarbonate housing (960°C)	PO
Fixings	
Fixing straps with HSHC screw	BRV

Accessories

Stainless steel cable plate kit (IP40)	CPO0481
Horizontal suspension kit (3m ropes)	17500050
Pre-cabling 3m 3G1.5 (3 wires)	CAB0008
Braided tinned copper cable	
Pre-cabling 3m 5G1.5 (5 wires)	CAB0011
Braided tinned copper cable	

Photometry



ULR=0%
FC3=100%
α (ULR≤4%) ≤ 45°

info@sammode.com | sammode.com